



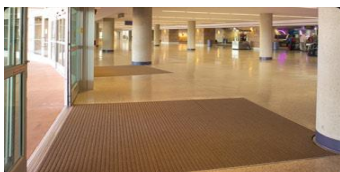
**MAIN OFFICE:** 8420 Rosemead Blvd – Pico Rivera, CA 90660  
562 / 821-0170 • FAX: 562 / 821-0171

**SAN DIEGO AREA:** 619 / 562-7762 • FAX: 619 / 562-8108

**LAS VEGAS AREA:** 702 / 454-3437 • FAX: 702 / 454-2248

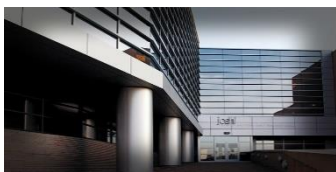
e-mail: sales@specialtybuilding.com

## ARCHITECTURAL AND CONSTRUCTION PRODUCTS



### FLOOR MATS & FRAMES, WALL COVERINGS, WALL & CORNER GUARDS

- Entrance Mats & Gratings **Spec #124800**
- Resilient Athletic Indoor Surfacing **Spec #096200**
- Rigid Vinyl Wall Coverings **Spec #097200**
- Impact Protection Systems **Spec #102600**



### INSULATED PANEL SYSTEMS

- Architectural Metal Panel Systems
- **Spec #074000**



### FASCIA AND COPING SYSTEMS

- Fascia and Coping Systems
- **Spec #077100**



### STAIR NOSINGS

- Photo-Luminescent, Cast, Aluminum, and Abrasive-filled
- **Spec #055500**



### LOUVERS, SUNSCREENS, GRILLES

- Architectural Louvers, Equipment Screens, Grilles, Sunshades
- Custom Architectural Products
- **Spec #008900 / 107113**



for people  
who create



### FAÇADE CLADDING, PHENOLIC WALL PANELS

- Façade Paneling – Exterior and Interior Applications
- Decorative Facades
- Scientific Solutions
- **Spec #074233**



### FLOOR DOORS AND ROOF HATCHES

- Roof Scuttles
- Automatic Fire Vents
- Floor, Vault, and Sidewalk Doors
- Ladder Up Safety Post and Bil-Guard Railing System
- **Spec 055000 / 077200**



**MAIN OFFICE:** 8420 Rosemead Blvd – Pico Rivera, CA 90660  
562 / 821-0170 • FAX: 562 / 821-0171  
**SAN DIEGO AREA:** 619 / 562-7762 • FAX: 619 / 562-8108  
**LAS VEGAS AREA:** 702 / 454-3437 • FAX: 702 / 454-2248  
e-mail: sales@specialtybuilding.com

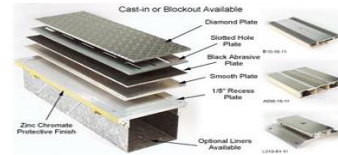
**ARCHITECTURAL AND CONSTRUCTION PRODUCTS**



- LADDERS**
- Aluminum Ladders and Wood Ladders
  - Spec #055133



- FLAGPOLES**
- Aluminum Flagpoles
  - Spec #107500



- EXPANSION JOINT COVERS**
- Aluminum, Stainless, and Bronze Expansion Joint Covers
  - Elastomeric Seismic Seals and Compression Seals
  - 2 hour, 3 hour, and 4 hour Fire Rated Barriers
  - Spec #079500



- EXPANSION JOINT COVERS**
- MetaZeal, Pro-Flex, and Evazote Seals
  - Spec #079500



- EXPANSION JOINT COVERS**
- Expand-O-Flash
  - Spec #079500



- WASTE CHUTES AND COLLECTORS**
- Trash and Linen Chutes
  - Spec #11800



- CUSTOM ARCHITECTURAL METAL FAÇADE & ROOFING SYSTEMS**
- Custom Architectural Façade & Roofing Systems
  - Spec 074000



- LOUVERS, SUNSCREENS, GRILLES**
- Architectural Louvers, Equipment Screens, Grilles, Sunshades
  - Custom Architectural Products
  - Spec #008900 / 107113